



## INITIALLY SET UP BY THE WEBMASTER

- Webmaster can safely delegate content management to any number of contributors/users
- Ideal for use in companies and organizations with Internet, intranet and extranet Web sites

## EASILY ADDED TO EXISTING SITES

- Runs on Unix, Linux, Windows NT
- No database software needed
- Safer than FTP
- No direct server access granted to contributor
- Live monitoring and automatic reporting
- Revision schedules available for each port
- No unauthorized server directories, executable files or web pages can be uploaded, read, renamed, copied, moved or deleted

### EASY SETUP



## UPDATES VIA E-MAIL

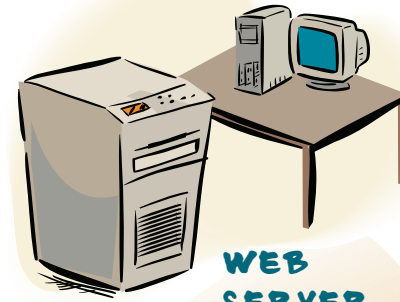
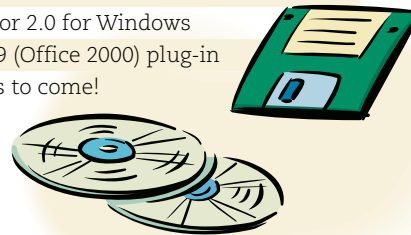
- Contributors send updates to their ports via e-mail
- Encryption is available



## USE ANY CONTENT EDITOR YOU LIKE

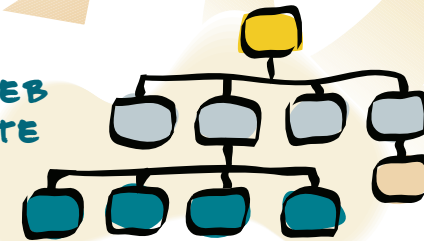
Also comes with:

- MS Office 97 plug-in for Word
- MS Office 2000 plug-in for Word and FrontPage
- Plug-in for Allaire HomeSite 4.0
- RPMmail Editor 2.0 for Windows
- WordPerfect 9 (Office 2000) plug-in
- More plug-ins to come!

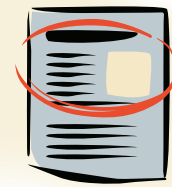


## WEB SERVER

## WEB SITE



## FULL-PAGE AUTHORIZING



## SINGLE PORT WITHIN PAGE



## MULTIPLE PORTS ON SAME PAGE

## THE GATEKEEPER

If required, proposed revisions can be pre-approved in either of two ways:

- Contributor e-mails revisions to supervisor for final editing, approval and subsequent forwarding via RPM.
- Contributor e-mails revisions via RPM to pre-production Web site for subsequent approval. Note: Transfer of approved Web pages to production Web site is then accomplished by authorized manager or user-created process outside of RPM.

## PORTS

TIGHTLY CONTROLLED AND DELEGATED ACCESS AREAS SET UP AS NEEDED\*

- User confined to specific area of page
- User given full-page authoring
- Multiple users can update areas of the same page independently and simultaneously

## EACH PORT CAN HAVE INDIVIDUALIZED ATTRIBUTES

- Immediate notification of revisions e-mailed to designated supervisors or managers
- Unique revision due dates can be scheduled

\*RPM also can be used to manage ASP or any other embedded-tag dynamic HTML page type.

### ONGOING CONTENT MANAGEMENT

For Web site managers who need a precise picture of site content activity and vitality, RPM's Information Management System tells which pages are being refreshed, by whom and how often.



## INFORMATION MANAGEMENT SYSTEM™

RPM offers an easy-to-use Information Management System (IMS) module that allows live monitoring and automatic reporting of RPM activity. This is helpful when responsibility for maintaining RPM pages has been delegated to department supervisors, staff persons or even volunteers. The IMS module provides a complete audit trail of all RPM activity.

### PORT ATTRIBUTES

The IMS module is a server-based, password-controlled system that allows senior management to individualize attributes for each RPM port. IMS access takes place via your Web browser. Selectable attributes include:

- Schedule control of RPM update calendars
- An automatic update reminder system
- Various levels of management can be notified of RPM activity

### REPORTS AND LOGS

Activity reports and logs can be sorted, viewed and printed. Customized reports include:

- One-year calendar showing scheduled updates (displays date and day of the week)
- Master list of RPM ports
- Activity log
- Discrepancy log



IWA-ENDORSED



**Reedy Creek**  
technologies



284 REEDY CREEK ROAD FOUR OAKS, NC 27524

T 919.934.6869 F 919.934.1537

WWW.REEDYCREEK.COM INFO@REEDYCREEK.COM

US PATENT NO. 5,937,160



Real-time Page Management®



CLICK HERE FOR  
**webmaster  
relief.™**

## WHAT IS RPM?

Real-time Page Management® is a patented, server-side application that addresses the security concerns and inadequate management controls associated with FTP and database-driven Web page content management solutions.

Simply put, RPM is a fast, easy and safe way to delegate content management. Partial or full-page access zones called “ports” can be assigned to content contributors. Page revisions consisting of formatted text, images, sound, video, charts, tables, links, etc., are sent directly to the Web server via electronic mail. Upon authentication, these revisions are automatically incorporated into the appropriate Web page immediately.

RPM is completely compatible with client-side content editors and all server-side operating systems — NT, Unix or Linux, including virtual hosts. RPM can be easily incorporated into existing Web pages, thus preserving your current investment.